

**GENERAL NOTES**

TYPICAL ALL EXTERIOR ELEVATIONS  
 FIBER & PAINT: \* ALL METAL FLASHING SILLERS &  
 DOWNSPOUTS (COLOR 1)

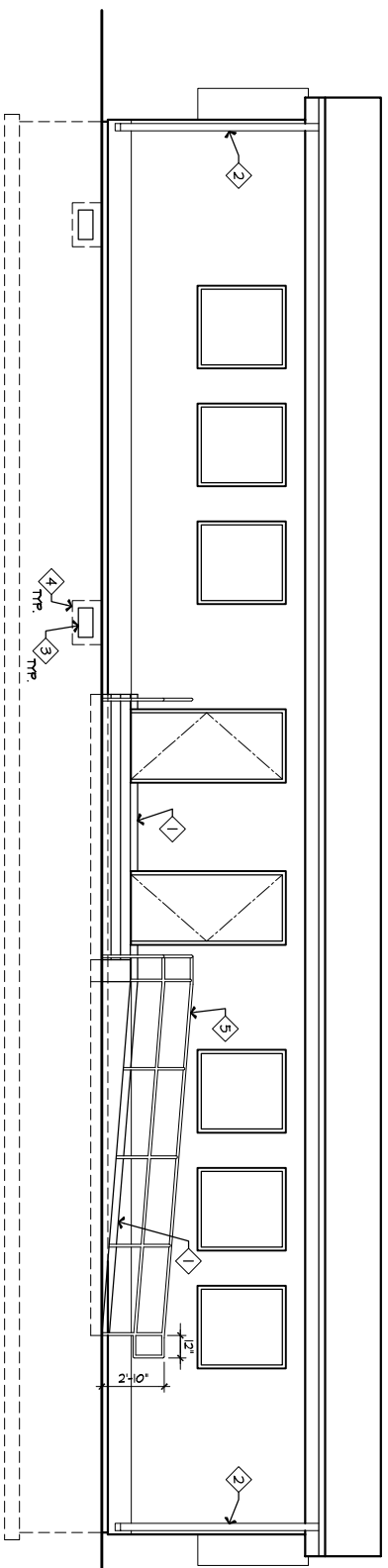
- \* ALL WOOD TRIM & FACIAS (COLOR 1)
- \* WOOD SIDINGS & SOFFITS (COLOR 2)
- \* HOLLOW METAL DOORS & FRAMES (COLOR 1)

ALL RIGHTS RESERVED  
 No portion of this work  
 may be reproduced,  
 stored in a retrieval  
 system, or transmitted  
 in any form or by any  
 means, electronic,  
 mechanical, photocopying,  
 recording, or by any  
 information storage and  
 retrieval system, without  
 the prior written  
 permission of  
 ARCHITECTS WEST INC.  
 and subject to criminal  
 prosecution.  
 6/3/05

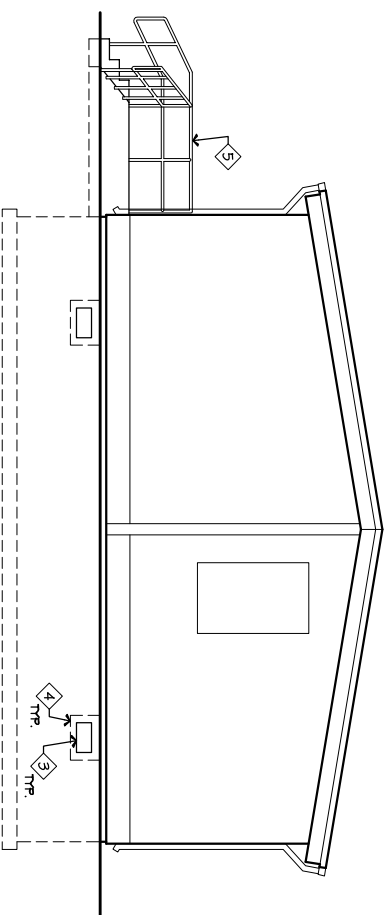


**KEYED NOTES**

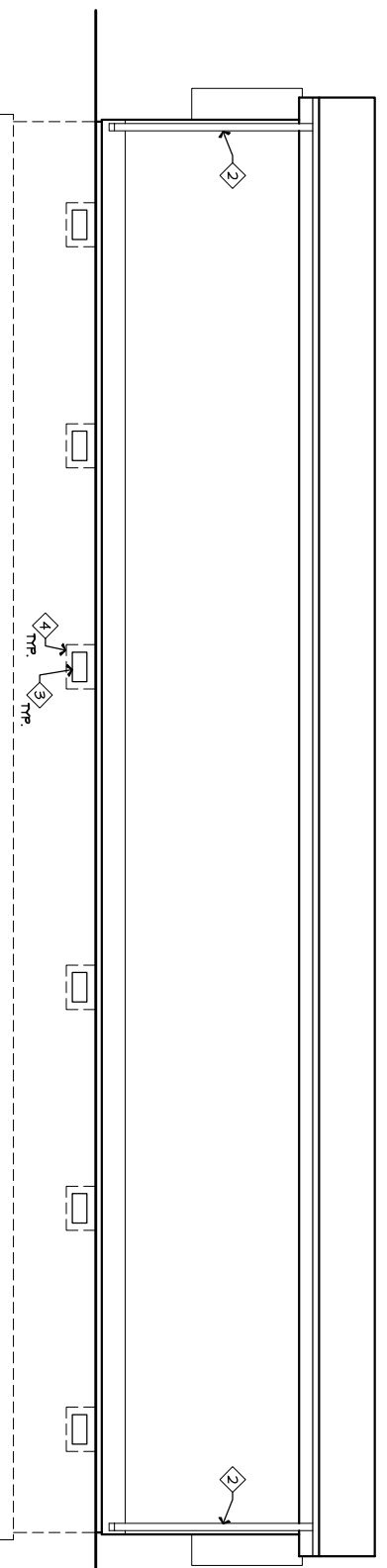
- 1 PROVIDE NEW VERTICAL FLASHING & COUNTER FLASHING
- 2 REMOVE & REPLACE (E) DOWN SPOUT W/ NEW
- 3 PROVIDE 8"x6" CRANK SPACE VENTS AT LOCATION SEE PLAN
- 4 PROVIDE REPERFORATED AREA WELL AT LOCATIONS WHERE VENTS ARE INDICATED
- 5 HANDRAIL, SEE 5 SERIES SHEETS FOR INFORMATION



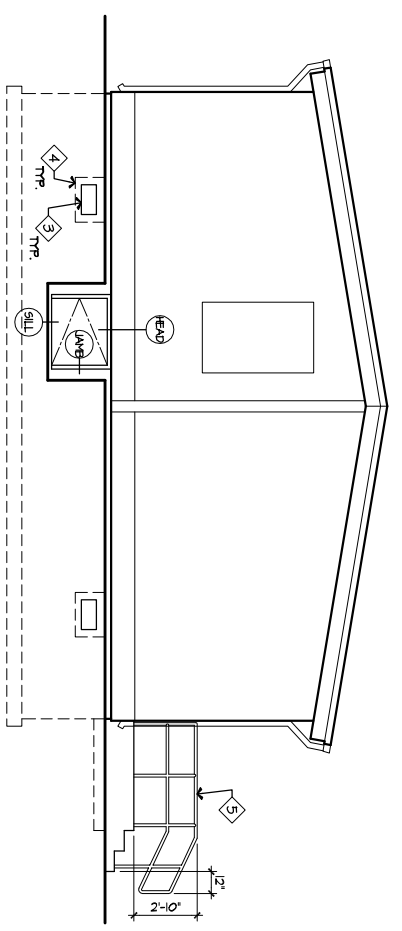
**NORTH EXTERIOR ELEVATION**  
 1/4" = 1'-0"



**WEST EXTERIOR ELEVATION**  
 1/4" = 1'-0"



**SOUTH EXTERIOR ELEVATION**  
 1/4" = 1'-0"



**EAST EXTERIOR ELEVATION**  
 1/4" = 1'-0"

**EXTERIOR ELEVATION**

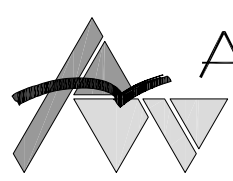
SCALE: 1/4" = 1'-0"

**PORTABLE CLASSROOM FOUNDATIONS**  
**CENTRAL VALLEY SCHOOL DISTRICT # 356**  
**SPOKANE VALLEY, WASHINGTON**  
**UNIVERSITY H.S. - EXTERIOR ELEVS**

**MECHANICAL**  
**L & S ENGINEERING**  
 W. 216 PACIFIC, STE. 211 (509) 747-2179  
 SPOKANE, WA. 99201

**ELECTRICAL**  
**L & S ENGINEERING**  
 W. 216 PACIFIC, STE. 211 (509) 747-2179  
 SPOKANE, WA. 99201

**STRUCTURAL**  
**ATWOOD / HINZMAN**  
 E. 1819 SPRINGFIELD (509) 535-0138  
 SPOKANE, WA. 99202



**Architects West inc.**  
 210 East Lakeside Avenue  
 Coeur d'Alene, Idaho 83814-2833  
 Phone: (208) 667-9402  
 Fax: (208) 667-6103  
 Email: awinc@architectswest.com

PROJECT NO. 0520.02  
 DESIGNED BY G.J.  
 DRAWN BY R.R.  
 DATE 06-03-05  
 CHECKED BY  
 REVISION SHEET NO.  
**A23**